



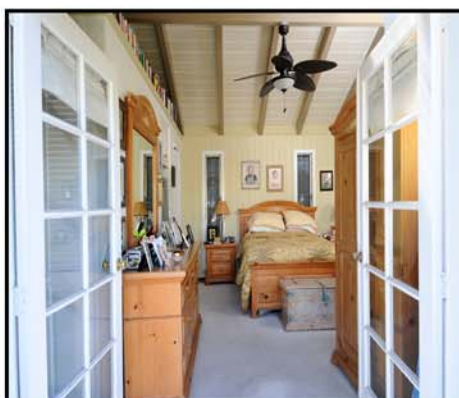
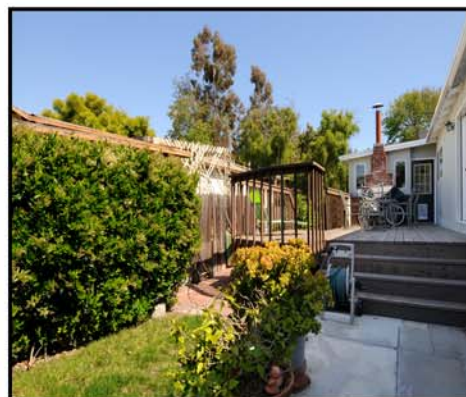
Real Estate Services

a Boyd E. Jeffery Inc. company

(310) 521 - 2902



543 Marine Avenue - Manhattan Beach



GASLIGHT DISTRICT CHARMER!!!! - WALK TO BEACH!!!!

Features Include:

- * 2 bedrooms, 2.5 bathrooms, 1356 square feet. (buyer to verify)
- * **Oversized 37.5 X 106 Lot (approx. 3930 sq/ft per city) (buyer to verify)**
- * Classic Fireplace warms front living room
- * Walk to beach! Located in the highly desirable Gaslight District!
- * Enjoy large deck with access to backyard
- * Terrific front yard boasts many plants and landscaping ideas
- * Newer roof, updated bathrooms, formal dining room
- * 7 Car Parking, perfect for guests!!! 2 Car enclosed garage
- * Weathered hardwood floors accentuate classic style of home
- * Close to downtown Manhattan Beach Specialty Shops, Jogging Trail, Live Oak Park, Pier and Grandview Elementary School
- * Private alley access to garage and backyard
- * Master bedroom opens to backyard/patio

***Offered at \$1,099,000**



For More Information Call:
BOYD E. JEFFERY
(310) 521-2902
 LIC #: 01225553